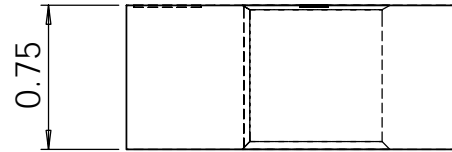
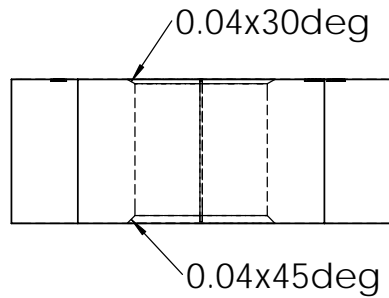
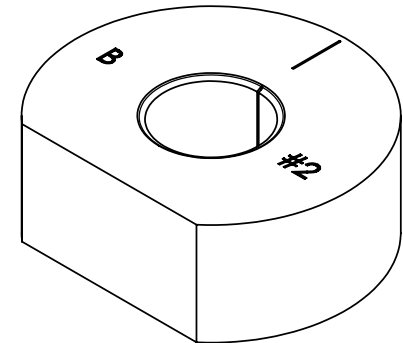
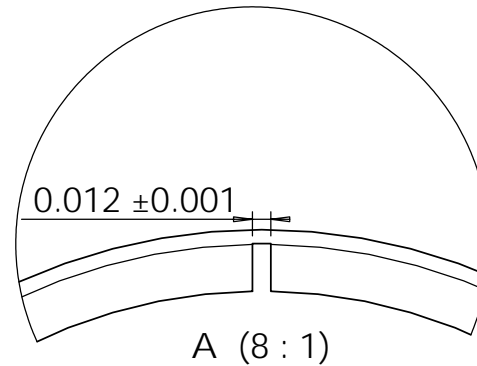
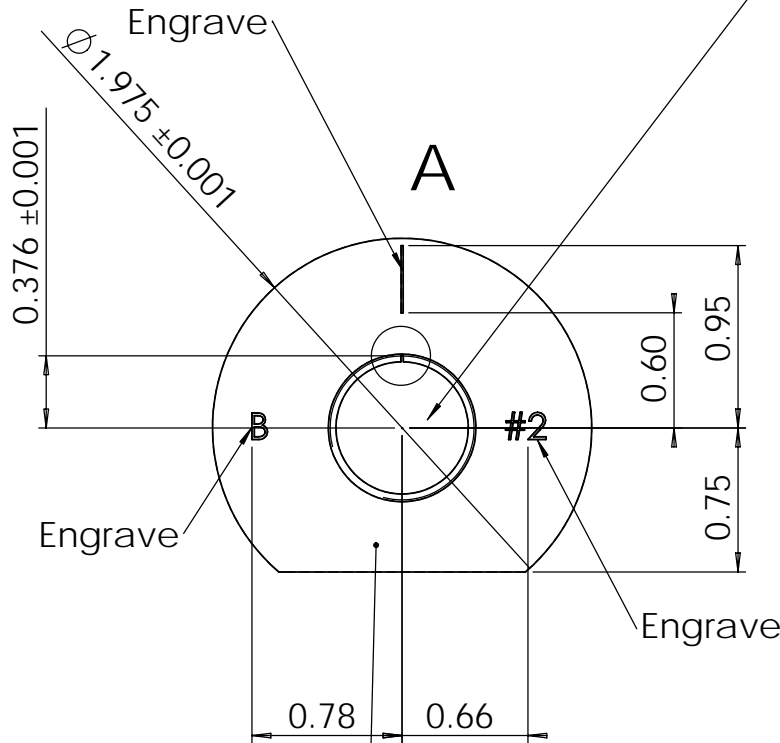


REVISIONS				
ZONE	REV.	DESCRIPTION	DATE	APPROVED
	B	Added label and chamfer note	5/26/05	AO
	C	Modified tapped hole callout	12/4/05	AO
	D	Added note to engrave serial number	11/30/06	AO
	E	Set OD to 1.975", set tolerance on OD and notch width	5/21/07	AO
	F	Reduced tol. on minor diameter, old part # VP-3003	9/14/07	AO
	G	Added chamfer callout, old part # VPCALSTD-2	11/18/09	AO



SINGLE POINT TURN ID AND THREAD!

Tap 0.750-16UNF-2B  
 Minor Dia: 0.689+/-0.001  
 Pitch Dia: 0.7094-0.7159  
 Major Dia: 0.750 MINIMUM



Engrave Serial #

**PROPRIETARY AND CONFIDENTIAL**  
 THE INFORMATION CONTAINED IN THIS DRAWING IS THE SOLE PROPERTY OF SARYNA TECHNOLOGIES LLC. ANY REPRODUCTION IN PART OR AS A WHOLE WITHOUT THE WRITTEN PERMISSION OF SARYNA TECHNOLOGIES LLC IS PROHIBITED.

		DIMENSIONS ARE IN INCHES TOLERANCES: FRACTIONAL ±1/32 ANGULAR: MACH± BEND ± TWO PLACE DECIMAL ±0.02 THREE PLACE DECIMAL ±0.003		NAME <b>AO</b>	DATE <b>4/10/05</b>	Saryna Technologies LLC	
		MATERIAL <b>6061 Aluminum</b>		CHECKED		VP Calibration Standard SCBA #2/Paintball 0.750"	
		FINISH <b>Anodize, Type 2, Black</b>		ENG APPR.		SIZE <b>A</b> DWG. NO. <b>VPP-108-2</b> REV. <b>G</b>	
NEXT ASSY	USED ON	APPLICATION DO NOT SCALE DRAWING		MFG APPR.		SCALE:1:1 WEIGHT: SHEET 1 OF 1	
				Q.A.		COMMENTS: BREAK ALL EXTERNAL SHARP EDGES UNLESS NOTED. ENGRAVING FONT IS NOT IMPORANT. USE 1/16" BALL END MILL, 0.01" DEEP OR LASER ENGRAVE.	