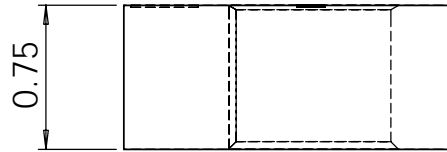
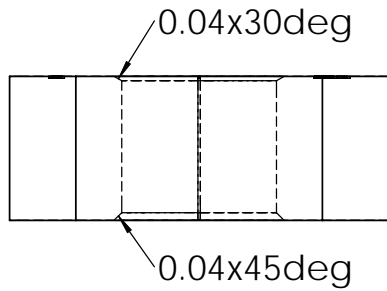
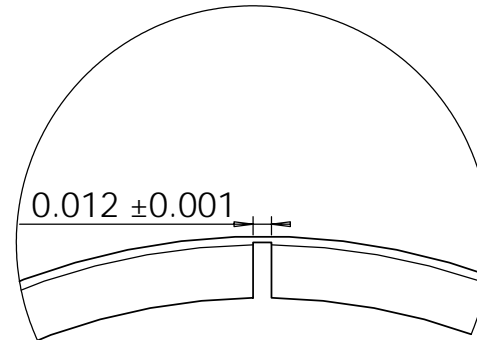
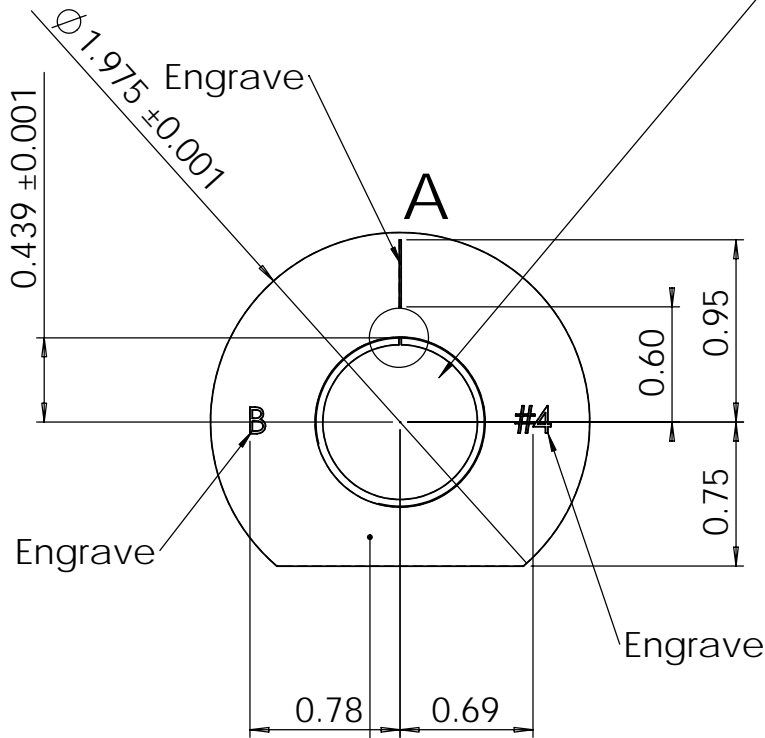


REVISIONS				
ZONE	REV.	DESCRIPTION	DATE	APPROVED
	B	Added notes to single point turn & engrave serial	10/10/06	AO
	C	Set OD to 1.975", set tolerance on OD and notch width	5/21/07	AO
	D	Reduced tol. on minor diameter, old part # VP-3005	9/14/07	AO
	E	Added chamfer callout, old part # VPCALSTD-4	11/18/09	AO

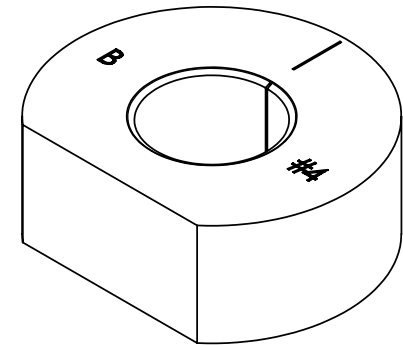


SINGLE POINT TURN ID AND THREAD!

Thread 0.875-14UNF-2B
 Minor Dia: 0.806+/-0.001
 Pitch Dia: 0.8286-0.8356
 Major Dia: 0.875 MINIMUM



A (8 : 1)



Engrave serial #

PROPRIETARY AND CONFIDENTIAL
 THE INFORMATION CONTAINED IN THIS DRAWING IS THE SOLE PROPERTY OF SARYNA TECHNOLOGIES LLC. ANY REPRODUCTION IN PART OR AS A WHOLE WITHOUT THE WRITTEN PERMISSION OF SARYNA TECHNOLOGIES LLC IS PROHIBITED.

		DIMENSIONS ARE IN INCHES TOLERANCES: FRACTIONAL ±1/32 ANGULAR: MACH ± BEND ± TWO PLACE DECIMAL ±0.02 THREE PLACE DECIMAL ±0.003		NAME AO	DATE 12/5/05	Saryna Technologies LLC	
		MATERIAL 6061 Aluminum		CHECKED		VP Calibration Standard SCBA #4	
		FINISH Anodize, Type 2, Black		ENG APPR.		SIZE A	
NEXT ASSY	USED ON	APPLICATION DO NOT SCALE DRAWING		MFG APPR.		DWG. NO. VPP-108-4	
				Q.A.		REV. E	
				COMMENTS: BREAK ALL EXTERNAL SHARP EDGES UNLESS NOTED. ENGRAVING FONT IS NOT IMPORANT. USE 1/16" BALL END MILL, 0.01" DEEP OR LASER ENGRAVE.		SCALE:1:1	
						WEIGHT:	
						SHEET 1 OF 1	