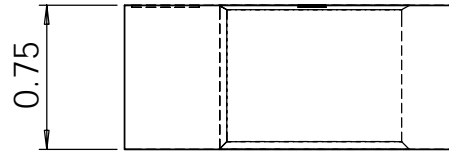
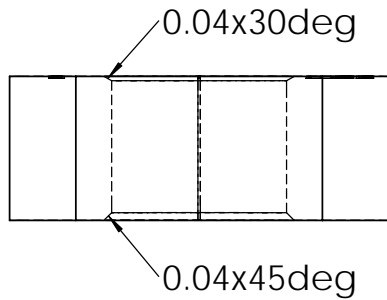
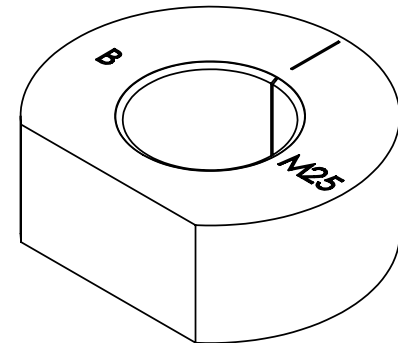
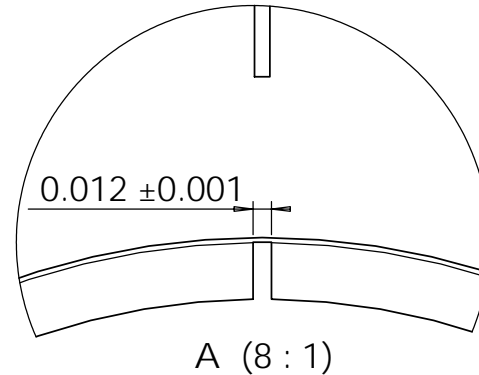
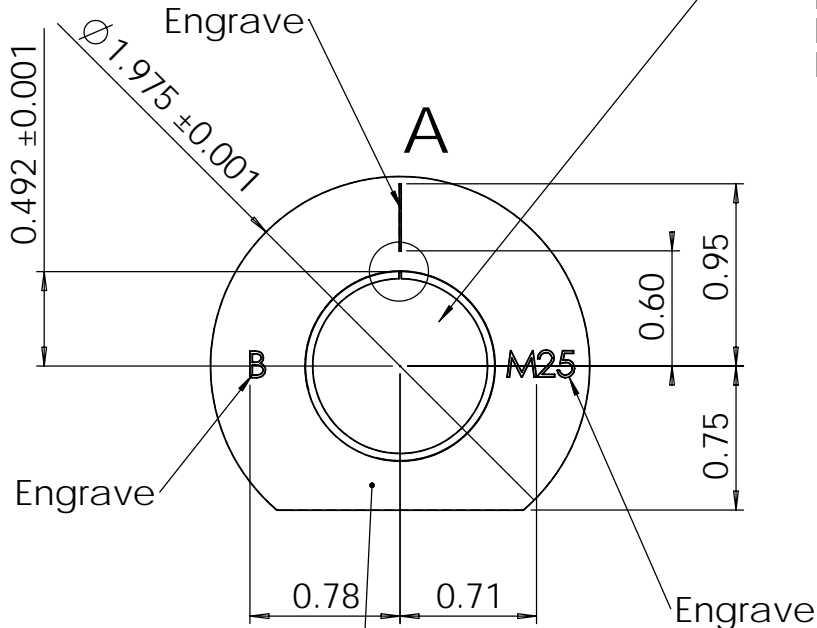


REVISIONS				
ZONE	REV.	DESCRIPTION	DATE	APPROVED
	B	Added note to single point thread and eng. ser#	11/30/06	AO
	C	Added chamfer callout, notch & OD tol., old part # VP-3006	11/18/09	AO



SINGLE POINT TURN ID AND THREAD!

Thread M25x2.0-6H
 Minor Dia: 0.911 +/-0.001
 Pitch Dia: 0.933-0.942
 Major Dia: 0.984 MINIMUM



Engrave Serial #

PROPRIETARY AND CONFIDENTIAL
 THE INFORMATION CONTAINED IN THIS DRAWING IS THE SOLE PROPERTY OF SARYNA TECHNOLOGIES LLC. ANY REPRODUCTION IN PART OR AS A WHOLE WITHOUT THE WRITTEN PERMISSION OF SARYNA TECHNOLOGIES LLC IS PROHIBITED.

		DIMENSIONS ARE IN INCHES TOLERANCES: FRACTIONAL ±1/32 ANGULAR: MACH ± BEND ± TWO PLACE DECIMAL ±0.02 THREE PLACE DECIMAL ±0.003		NAME AO	DATE 12/6/05	Saryna Technologies LLC	
		MATERIAL 6061 Aluminum		CHECKED		VP Calibration Standard M25	
		FINISH Anodize, Type 2, Black		ENG APPR.		SIZE A	
NEXT ASSY	USED ON	APPLICATION DO NOT SCALE DRAWING		MFG APPR.		DWG. NO. VPP-108-M25	
				Q.A.		REV. C	
				COMMENTS: BREAK ALL EXTERNAL SHARP EDGES UNLESS NOTED. ENGRAVING FONT IS NOT IMPORTANT. USE 1/16" BALL END MILL, 0.01" DEEP OR LASER ENGRAVE.		SCALE:1:1 WEIGHT: SHEET 1 OF 1	